

MINUTEMAN[®]

Power Technologies

From Para Systems, Inc.

SNMP-SSL Quick Install

Installation

To install SNMP-SSL card on a network you need a workstation running Microsoft Windows (9x, Me, NT4.0, 2000, XP or later). If your network dynamically configures the IP address, all you need is a workstation with a Web Browser.

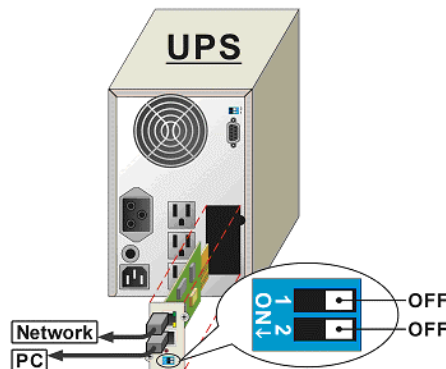
There are three methods for setting the SNMP-SSL card's configuration:

1. Set up via the serial port
2. Set up via Telnet
3. Set up via a Web Browser

Hardware Installation

Note: The SNMP-SSL cards are designed to be Hot Swappable, but there is a remote chance that when Hot-Swapping the SNMP-SSL card that the UPS will shutdown. MINUTEMAN recommends following steps 1 through 4 when installing the SNMP-SSL card, but to hot-swap, skip to step number 3.

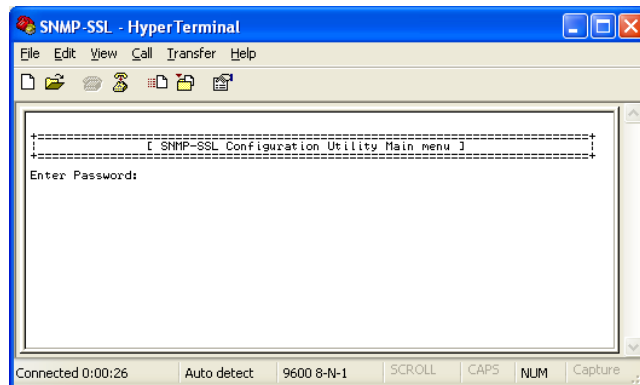
1. Turn off all the equipment that is plugged into the UPS.
2. Turn off the UPS and unplug the UPS's power cord from the AC wall outlet.
3. Remove the Option Slot cover plate from the rear panel of the UPS.
4. Insert the SNMP-SSL card into the option slot and secure with the retaining screws.



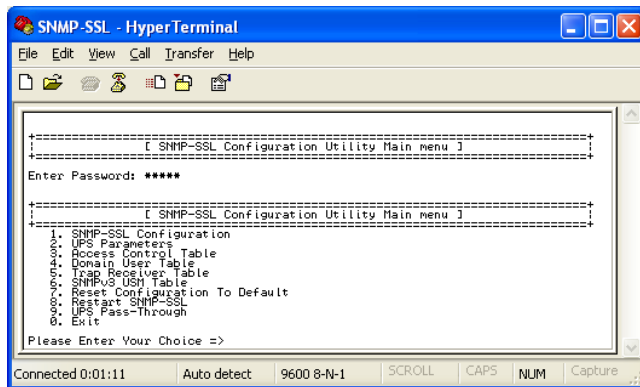
Configuration through the Serial Port

1. Use the RJ45 to RS232 serial cable to connect between the SNMP-SSL card's COM port and the COM port on the workstation.
2. Set both the DIP-switches of the SNMP-SSL card to the OFF position (operating mode) for configuration.
3. From a workstation running Microsoft Windows (9x, Me, NT4.0, 2000, XP, 2003 or later), open HyperTerminal of the Accessory Program Group.
4. Enter a name and choose an icon for the connection.

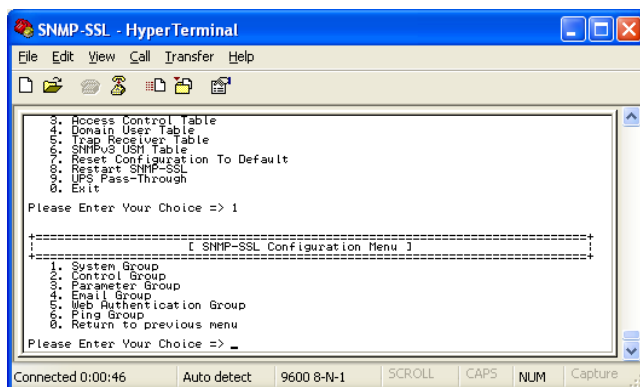
5. Select direct COM port connection.
6. Setup the COM port parameters - 9600 bps, 8 data bits, no parity, 1 stop bit and no flow control.
7. Power on the UPS and wait for SNMP-SSL card to boot up. Hit the “**Enter**” key once to display the menu below. Enter the password (default password is **admin**) and hit the “**Enter**” key.



8. The SNMP-SSL Configuration Utility Main Menu will be displayed. Select “1” to enter the SNMP-SSL Configuration Menu.



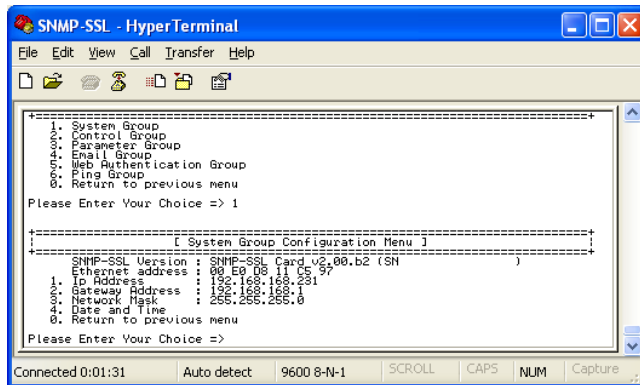
9. The SNMP-SSL Configuration Menu will be displayed. Select “1” to enter the System Group Configuration Menu.



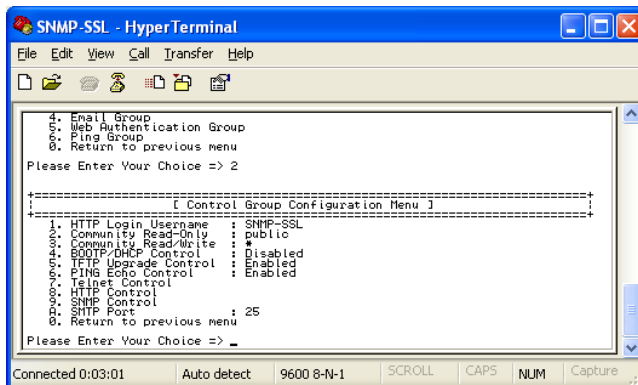
10. The SNMP-SSL System Group Configuration Menu will be displayed. Set the IP Address, Gateway Address and the Network Mask (subnet) parameters.

Note: The minimum requirement is to set the IP Address (**The default IP address is 192.168.1.100**), the Gateway Address, and the Network Mask to be able to connect to the SNMP-SSL card with a Web Browser. All other setting may be configured using a Web Browser except for changing the Login Password.

11. After completing these settings, select “0” to return to the Configuration Menu.



12. In the Configuration Menu, select “2” to go the Control Group Configuration Menu. Then select 1 to change the Login Username and enabled/disabled the different network protocols.
13. After completing these settings, select “0” to return to the Configuration Menu.



14. The SNMP-SSL configuration is complete, select “0” from the SNMP-SSL Configuration Utility Main Menu to exit the configuration and end the HyperTerminal session. Disconnect the RJ45 to DB9 female serial cable from the SNMP-SSL COM port and the computer COM port. Connect the network cable to the Network port on the SNMP-SSL card. Open a Web Browser and input the IP address to view the SNMP-SSL card’s web pages.

Configuration through TELNET command

1. Make sure that you have a TCP/IP network already installed.
2. Connect the network cable to the Network port on the SNMP-SSL card.
3. Run command shell (i.e. Windows MS-DOS prompt).
4. SNMP-SSL card will initially try to acquire an IP address from the DHCP network service.
5. If the DHCP network service is running, type “Telnet <IP address obtained from DHCP>” and then press enter. Now proceed to Step 8 below.
6. If the DHCP network service is not running, contact your network administrator to get an IP address for you workstation that has the same network’s address as the SNMP-SSL card’s default IP address. **The default IP address of SNMP-SSL is 192.168.1.100**
7. Type Telnet 192.168.1.100 and press enter.
8. From this point, the configuration procedures are the same as the Configuration through the Serial Port (start at number 7 on page 2).

Configuration through a Web Browser

Normally, the first time you use SNMP-SSL card, your workstation is unable to communicate with the SNMP-SSL card since they are not in the same IP subnet. However, you may use the “route add” command to manipulate the network routing table in your workstation in order to complete the SNMP-SSL card’s configuration. If the IP address of the machine is in the same subnet as SNMP-SSL, just run the Web Browser.

1. From a workstation running Microsoft Windows (9x, Me, NT4.0, 2000, XP, 2003 or later) set up the TCP/IP protocol, if necessary.
2. Connect the network cable to the Network port on the SNMP-SSL card.
3. Run command shell (i.e. Windows MS-DOS prompt) and enter the following command to add a routing condition:

```
Route add 192.168.1.100 210.67.192.147
```

Assuming the IP address of the workstation is 210.67.192.147

The default IP address of SNMP-SSL card is 192.168.1.100

3. Start your Web Browser.
4. Enter the URL **http:// 192.168.1.100** in the address box. The SNMP-SSL card’s home page will be displayed.
5. Open the SNMP-SSL Management folder.
6. Open the SNMP-SSL Configuration page.
7. Click the Become Administrator button at the bottom of the page. Enter **SNMP-SSL** as the login name and **admin** as the password. (Case sensitive)
8. Enter the IP Address.
9. Enter the Gateway Address.
10. Enter the Subnet Mask.
11. Once all the changes have been made, select Set Value to save the changes.
12. The SNMP-SSL configuration is complete. See the SNMP-SSL User’s Manual.

