

Remote Power Manager

RPM1521E 2-port IP-addressable RPM

The RPM1521E is an internet-ready SNMP power management device designed with integrated versatile functions including outlet control, optional temperature monitoring, remote web administration, event alerts, and much more. This RPM helps system administrators or IT personnel monitor and control connected equipment and take preventive measures when needed. It allows an administrator to remotely control the AC power for two connected devices, such as servers, routers, modems, DVRs, security and telephone equipment.

The RPM1521E offers easy setup and a user-friendly interface and control, while allowing network access via Ethernet. Once connected and properly set up, the administrator can manage the AC power of the devices from anywhere in the world through a web browser, greatly reducing the need for on-site service calls.



Specs, video, & more at minutemanups.com/rpm



Internet-Ready RPM
Access to port controls



Automatic Notification
Stay ahead of power problems



Mobile Access & Control
Via smartphone, tablet, or PC



3-yr Electronics Warranty
Parts & labor warranty

Applications



POS Systems
ATMs, Cash Registers



Security
Midsize DVR, Acc Ctrl, Intrusion



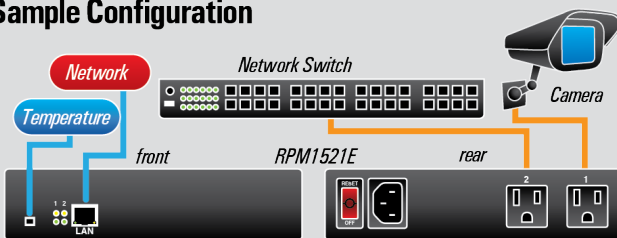
IT/Network
Switches, Hubs, Access Points

Capacity:

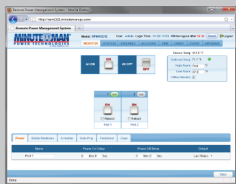
● Sm ● Med ● Lrg

How do remote power managers work?

Sample Configuration



Monitoring & Control Made Easy



Easy to use, secure web interface - no App required



Access from anywhere via Web Browser

Key Features

- **IP-addressable Remote Power Manager**
Built-in web server and two power outlets
- **Control Power Equipment Remotely**
Via the internet without on-site presence of service personnel
- **Instant Notifications to Eliminate Downtime**
Email, SMS text messages and trap notification will be generated when power events have occurred.
- **Two Independently Controllable Ports**
Each AC power outlet can be independently switched ON/OFF, power cycled for immediate reboots or rebooted with timed delays and power event scheduling
- **LED Indicators**
For power status and control mode indication
- **Supports Power Start Sequencing**
Prevents all of the connected devices from starting simultaneously to limit the in-rush current to the RPM
- **Easy Web Setup**
For scheduling daily, weekly, monthly & yearly power operations on a specific outlet
- **Auto-Ping Feature**
Monitors & auto detects any failed network equipment and performs a timed reboot
- **Protected Access**
Helps manage user privileges and prevent unauthorized access to the control menu through the network, supports secure email (TLS)
- **Provides Multi-Group Accounts**
Lets different users control different power outlets
- **Supports SYSLOG, Web API function, and SSL (Compatible SNMP v1, v2c, v3)**
- **Overload and Connected Equipment Protection via the Input Circuit Breaker**
- **Rack Mountable Design with Holes on the Side of the Metal Enclosure**
With optional rack-mounting kit (BRKT RM RPM1521E)
- **Provides Surge Protection**
Eliminate disrupting/damaging effects of momentary voltage spikes or surges

Remote Monitoring & Power Management of:

- Computer equipment
- Network devices
- Home appliances
- Manufacturing Controls
- Cash Registers
- ATM's
- Terminals
- Kiosks
- Routers, Switches
- Security Cameras
- Access Control

Remote Power Manager Specifications & Features

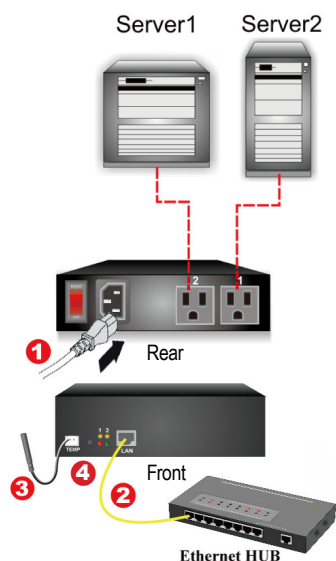
RPM1521E 2-port IP-addressable RPM

Model Number		RPM1521E
General Specifications	Number of Phases	Single (1Ø 2W + G)
	Input & Output Voltage	100 - 120VAC
	Input & Output Frequency	47 - 63Hz
	Total Output Current (max)	12 Amp (at 120V)
	Surge Energy Rating	800 J
	Input Protection	Re-settable Power Switch, 15 Amp Breaker
	Operating Temperature	0 – 60°C (+32 - +140°F)
	Storage Temperature	-15 to +60°C (+5 to +140°F)
	Operating/Storage Humidity	0 - 95% Non-Condensing
	Operating Elevation	0 to 3,000m (0 to +10,000 ft)
	Storage Elevation	0 to 15,000m (0 to +50,000 ft)
	Utility Power Inlet	IEC 320 C14
	Power Cord	IEC 320 C13 to NEMA 5-15P (6ft)
	Output Receptacles	NEMA 5-15R
Physical	Net Dimensions (L x W x H)	7.17 x 4.90 x 1.70" 182 x 125 x 44mm
	Net Weight	1.78 lbs 0.806 kgs
	Shipping Dimensions (L x W x H)	9.60 x 8.50 x 3.10" 245 x 217 x 80mm
	Shipping Weight	2.78 lbs 1.26 kgs
	Safety Certification	cTUVus*

* Tested to UL60951-1

Benefits of the RPM1521E

- Improves administrative efficiencies with remote power monitoring and control
- Reduces system downtime without dispatching service personnel to remote locations
- Monitoring and management from anywhere in the world
- Surge protection for the connected equipment
- Supports secure email (TLS) such as Gmail
- Notification via email, SNMP traps and SMS text message
- IP-addressable Remote Power Manager (RPM)
- Manual power ON/OFF button
- Optional temperature probe (T-PROBE-1521E)
- Three-year parts and labor warranty
- \$30,000 Minuteman Platinum Protection Plan (US & Canada only)
- Supports downloading and uploading configuration files



Typical Set-up for RPM1521E

- 1 Input utility power
- 2 Ethernet connection
- 3 Temperature probe (optional)
- 4 LED indicators

Standard 3-year parts and labor warranty for properly connected equipment



MINUTEMAN
POWER TECHNOLOGIES

Para Systems, Inc.

1455 LeMay Drive
Carrollton, TX 75007
800.238.7272 • 972.446.7363
www.minutemanups.com • www.sizemyups.com



© Copyright 2016, Para Systems, Inc. Product specifications are subject to change without notice. Minuteman, Platinum Protection Plan, are registered trademarks of Para Systems, Inc. All other trademarks are the property of their respective holders. All rights reserved.

Publication No. 34000510 (1-2016)